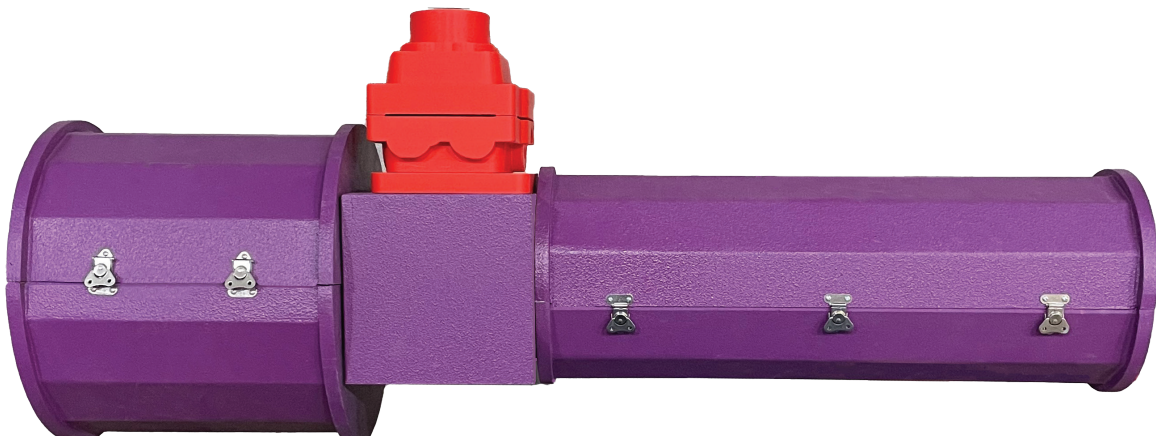
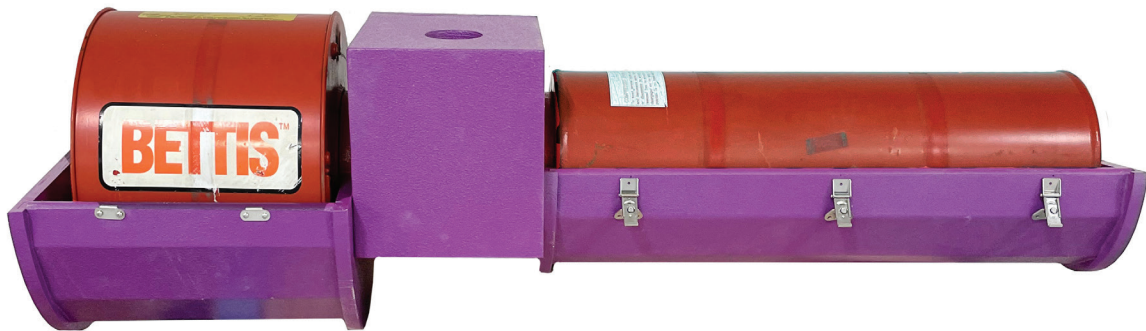


K-MASS[®] FI

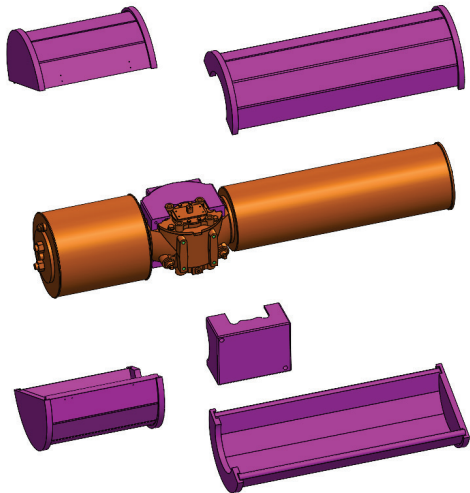
Factory or Field Installable K-MASS Fireproofing

SCOTCH YOKE ACTUATORS



Simplified Fireproofing for Critical Process Control Equipment

SCOTCH YOKE ACTUATORS

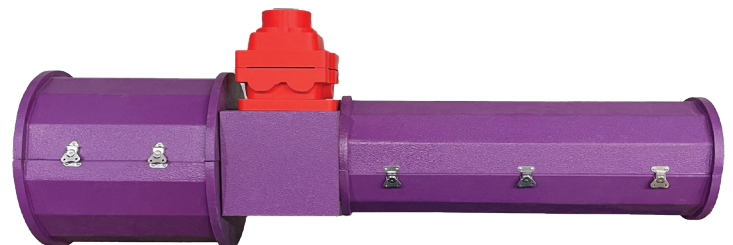


VALUE

- Class leading **K-MASS** intumescent coating for CPCE
- No need to ship the actuator to us for coating
- Ships in less than two weeks
- Lower total cost of ownership
- Spare parts readily available
- Lasts the life of the actuator
- Project discounts available

CONVENIENCE

- Install when and where you choose
- Quick and easy installation
- Available for most brands of actuators
- Does not affect functionality or usability
- Minimal space required for installation
- Custom designed and made to suit your project needs
- Easy to retrofit existing, in-service actuators
- Designed to fit actuators on-site (while still connected)
- Compatible with **K-MASS** cable glands and limit switches
- Perfectly suited for ESD valves and actuators
- Compatible with different types of valve adaptations



QUALITY

- Utilizes our proven, often specified **K-MASS** intumescent epoxy
- Uniquely formulated and specifically designed intumescent for Critical Process Control Equipment (CPCE) fire protection
- Provides superior insulation characteristics in high heat flux, rapid temperature rise hydrocarbon fires
- Tested to UL 1709 fire test curve (minimum of 30 minutes at 1,093°C/ 2,000°F) with full functional tests as per API 2218
- Comprehensive in-house test facilities with three furnaces
- Our engineers work with standards to improve industry safety

Patents Pending

Thermal Designs, Inc. - United States
5352 Prudence Street
Houston, Texas 77045 USA
Phone: +1 713-433-8110
ussales@tdikmass.com

Thermal Designs LTD UK - United Kingdom
The Broadway Market Lavington Devizes
Wiltshire, England UK SN10 5RQ
Phone: +44 (0) 1380 816079
uksales@tdikmass.com

Thermal Designs, Inc. - Canada
Unit 1, 5220 Duncan Ave
Blackfalds, Alberta T0M 0J0
Phone: +1 403-391-1578
casales@tdikmass.com