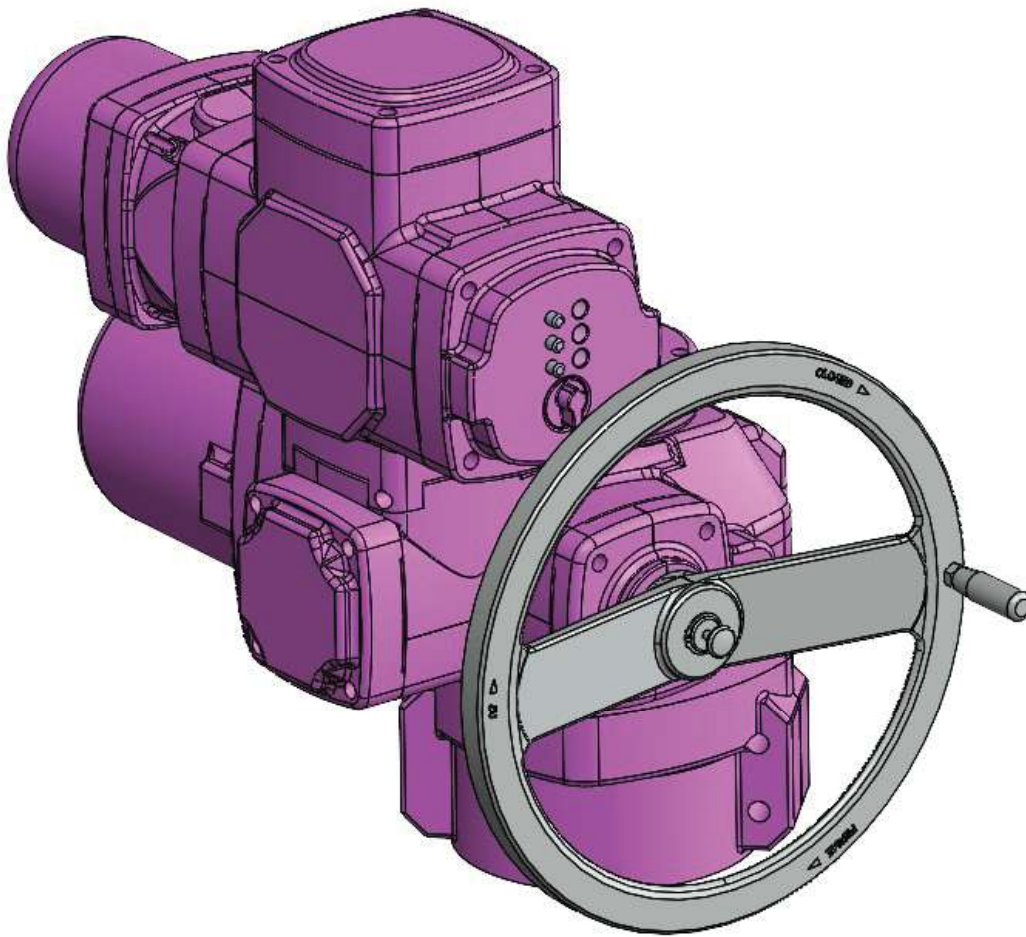




Field or Factory Installable **K-MASS**<sup>®</sup> *FI*  
Intumescent Epoxy Covers for New or Installed  
Actuators



**K-MASS *FI***  
INSTALLATION MANUAL

**AUMA SAEX 10.2**  
ACTUATORS

# AUMA SAEX 10.2

## Actuators

<b>PART NUMBERS</b>			
<b>Item</b>	<b>Description</b>	<b>Part Number</b>	<b>Qty</b>
<b>KIT</b>	<b>K-MASS FI Kit for SAEX 7.2 - Complete Kit</b>	<b>FASAEX-10000</b>	<b>1</b>
<b>KIT</b>	<b>K-MASS FI Kit for SAEX 7.2 - Gearcase Cover Only</b>	<b>FASAEX-10001</b>	<b>1</b>
1	Gearcase Cover Handwheel Side Top	FASAEX-10201	1
2	Gearcase Cover Handwheel Side Bottom	FASAEX-10202	1
3	Gearcase Cover Motor Side Top 1	FASAEX-10203	1
4	Gearcase Cover Motor Side Top 2	FASAEX-10204	1
5	Gearcase Cover Motor Side Bottom 1	FASAEX-10205	1
6	Gearcase Cover Motor Side Bottom 2	FASAEX-10206	1
7	Stem Cap Cover - Closed	FASAEX-10207	1
8	Motor Cover	FASAEX-10208	1
9	Handwheel Cover	FASAEX-10209	2
10	Thrust Base Half	FASAEX-10210	2
11	Gearcase Cover Deckel Cover	FASAEX-C001	1
<b>KIT</b>	<b>K-MASS FI Kit for 7.2 - Controls Cover Only</b>	<b>FASAEX-10002</b>	<b>1</b>
12	Controls Cover Deckel Cover Side 1	FASAEX-C002	1
13	Controls Cover Deckel Cover Side 2	FASAEX-C003	1
14	Controls Cover Gearcase Side 1	FASAEX-C004	1
15	Controls Cover Gearcase Side 2	FASAEX-C005	1
16	Controls Cover Deckel Cover	FASAEX-C006	1
17	Controls Cover Frame	FASAEX-C007	2
18	Controls Cover Back Cover	FASAEX-C008	1
19	Controls Cover Controls Cover	FASAEX-C009	1
20	Controls Cover Knob	FASAEX-C010	1
21	Controls Cover Conduit Cover	FASAEX-C011	2
	3M Fire Barrier Caulk (Tube)	FI-0001	1
	Box Primary/ Spare Fasteners	FASAEX-10310	1
	Installation Manual	FASAEX-10320	1

# AUMA SAEX 10.2

## Actuators

### TOOLS and HARDWARE REQUIRED

ITEM
5 mm Hex-Key
6 mm Hex-Key
6 mm Hex-Key - 8 in. long

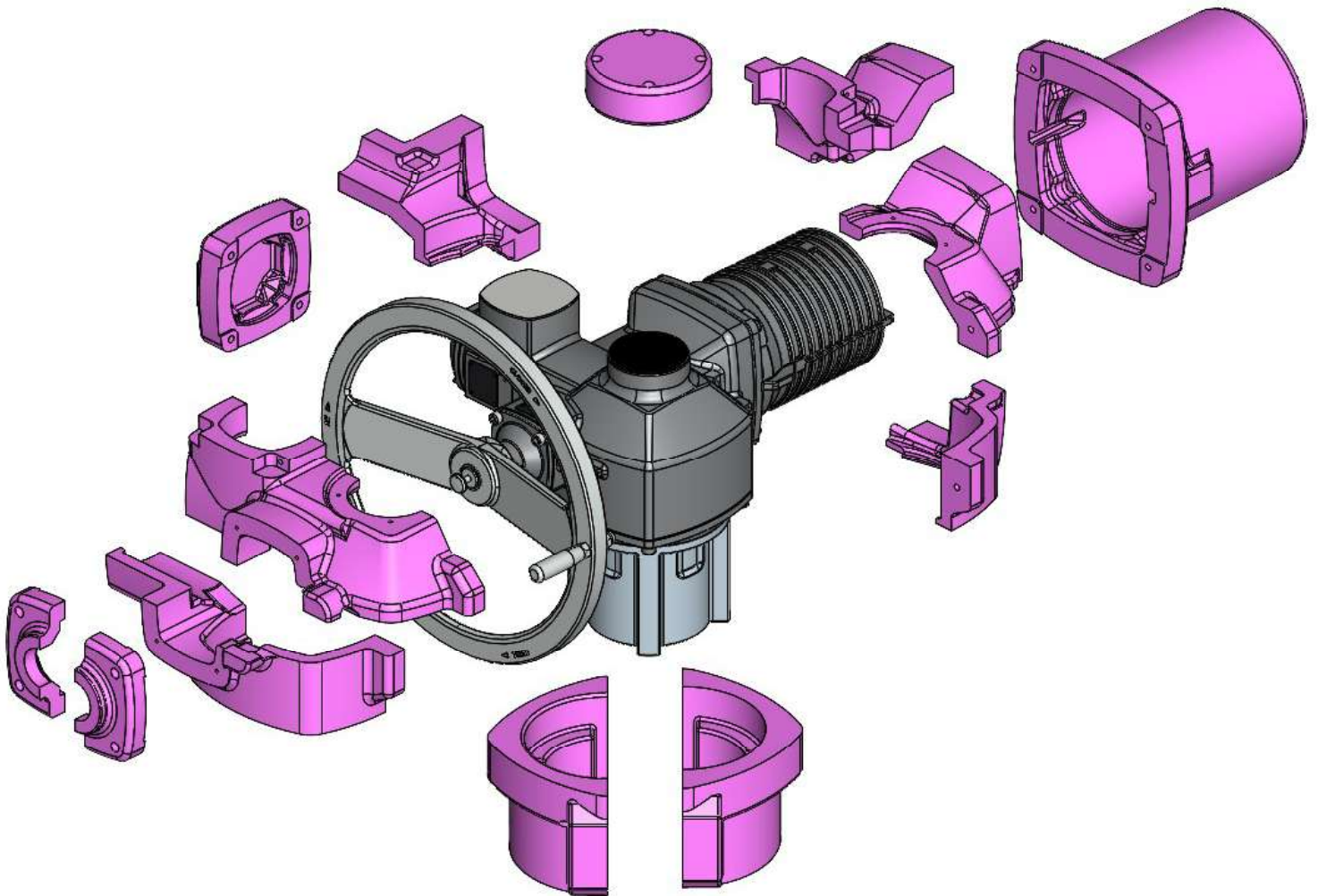
### FASTENERS INCLUDED WITH KIT

SOCKET HEAD CAP SCREWS		
SIZE	REQUIRED	SPARES
M6 - 25	8	3
M8 x 30	35	3

# AUMA SAEX 10.2

Actuators

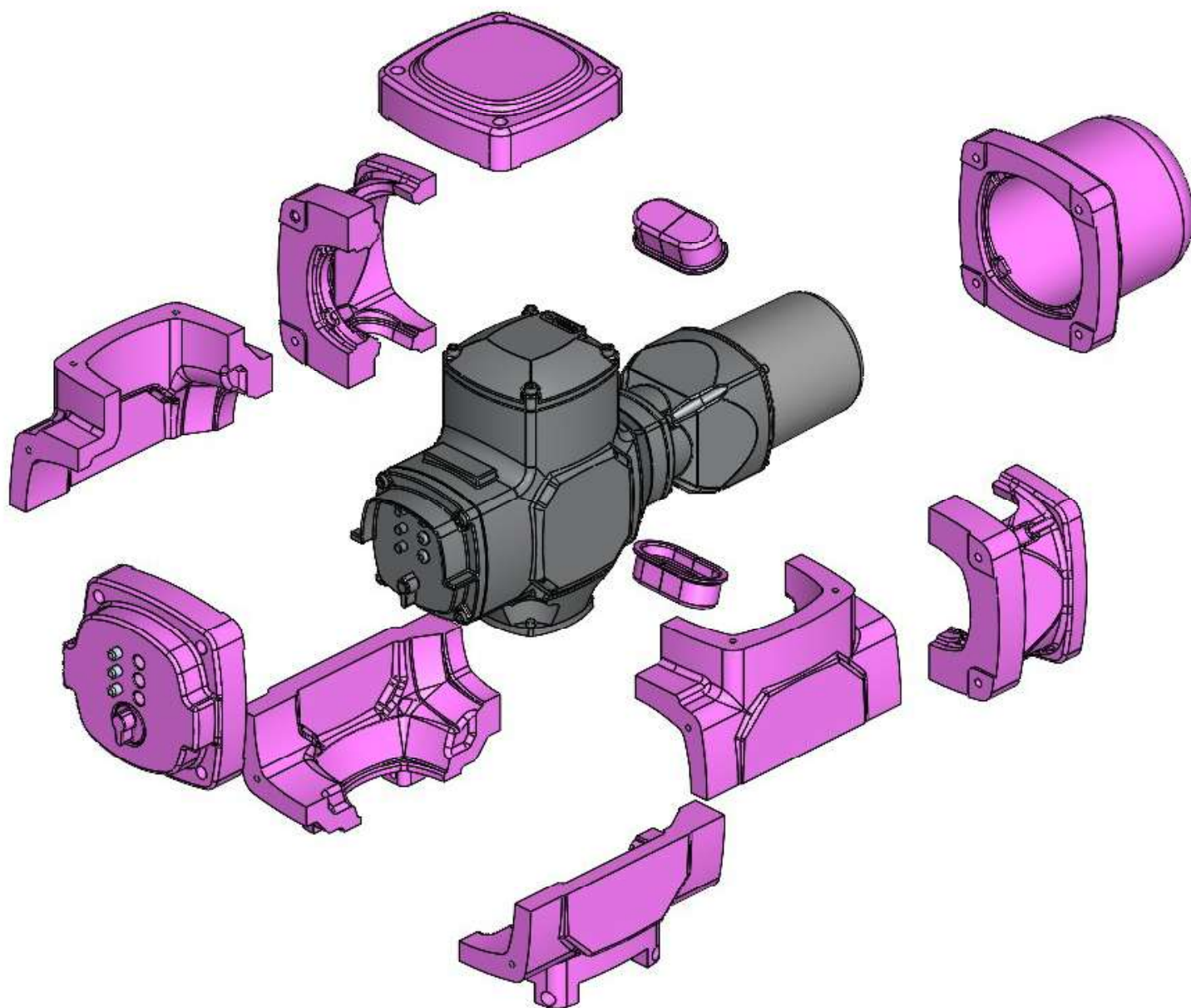
## *Gearcase Assembly (Lower)*



# AUMA SAEX 10.2

Actuators

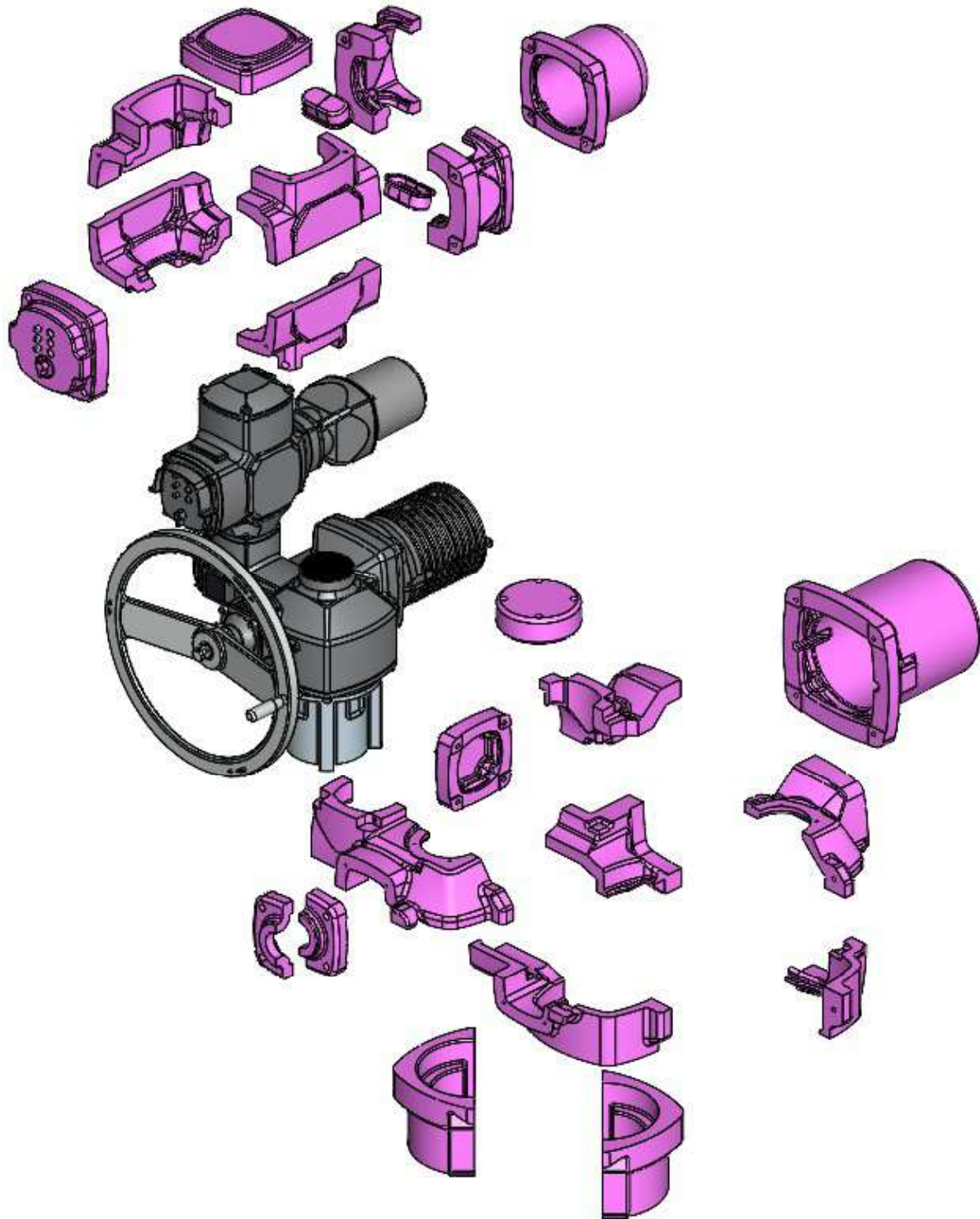
## *Controls Assembly (Upper)*



# AUMA SAEX 10.2

Actuators

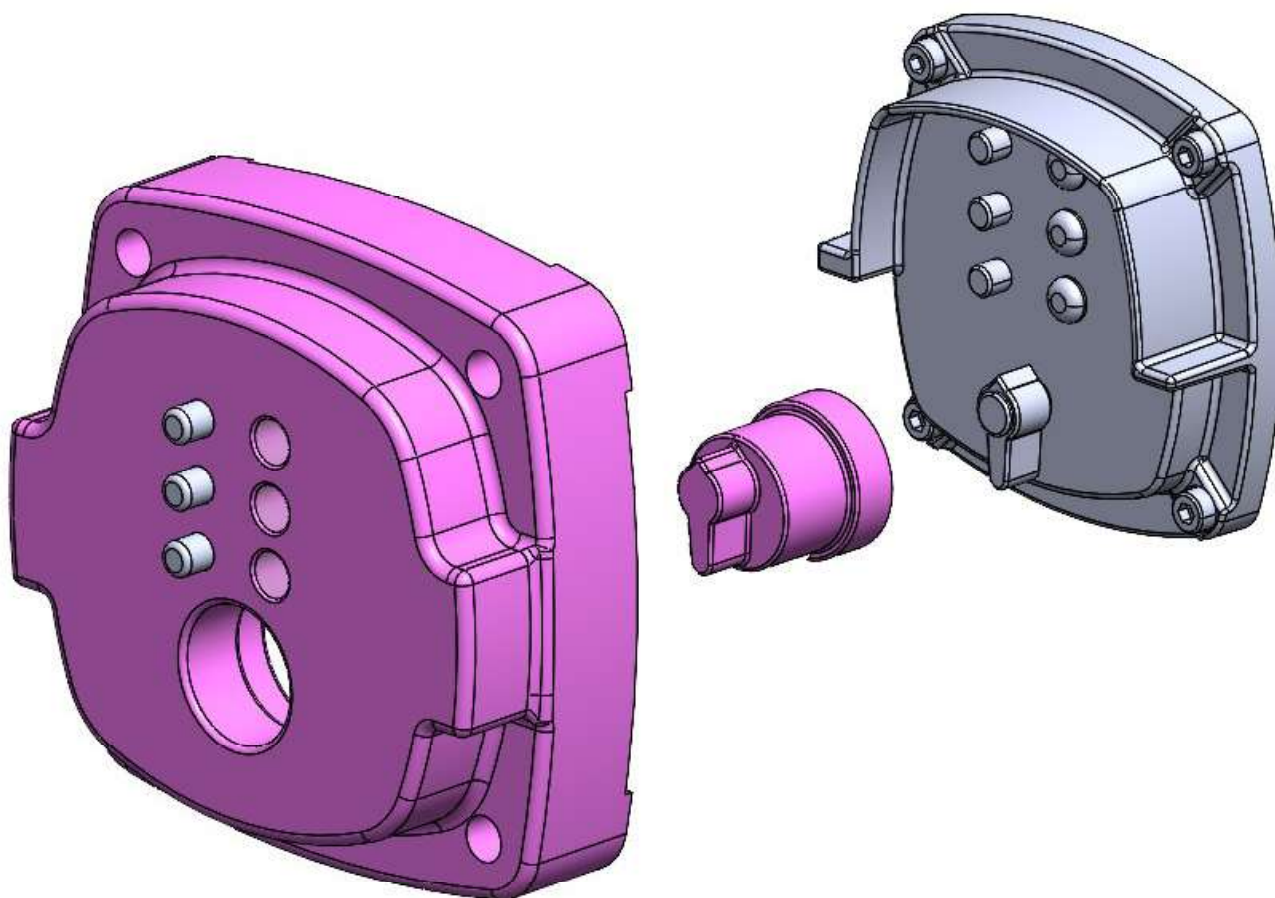
## *Complete Assembly*



# AUMA SAEX 10.2

Actuators

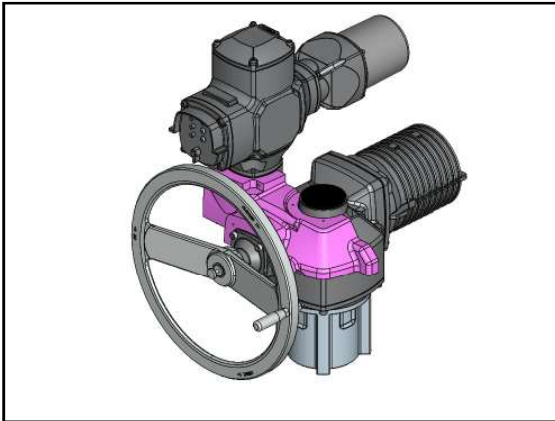
## *Controls Cover Knob Assembly*



## **VERY IMPORTANT!**

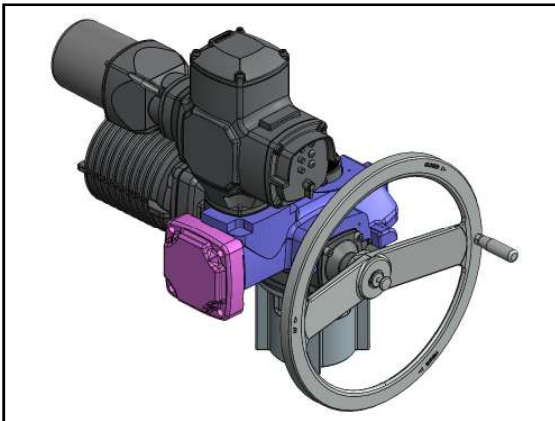
PLEASE leave all fasteners slightly loose to aid in aligning parts during installation. When all parts are installed, go back and **HAND TIGHTEN ONLY** to 15 ft/ lbs.

# **GEARCASE COVER**



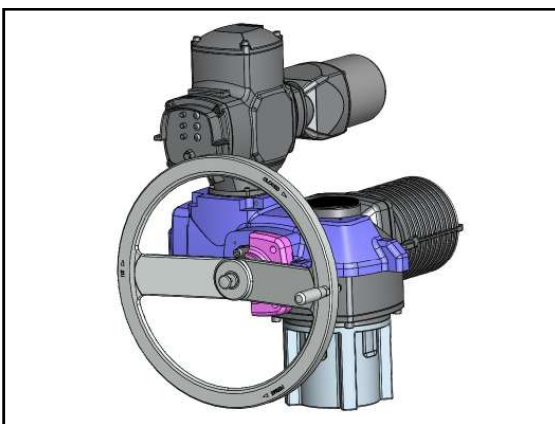
### **Step 1**

Place Gearcase Cover Handwheel Side Top (FASAEX-10201) as shown.



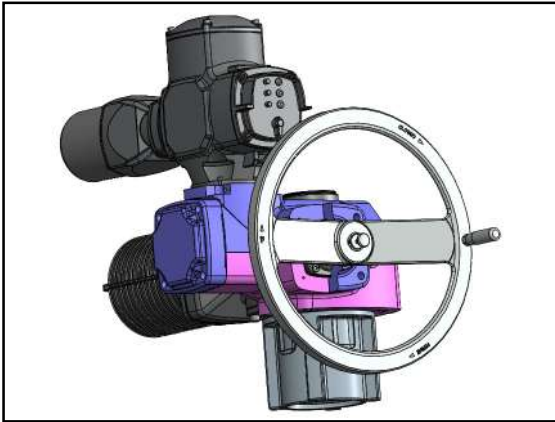
### **Step 2**

Attach Gearcase Cover Deckel Cover (FASAEX-C001) to Handwheel Side Top with (1) M8 x 30 socket head cap screw.



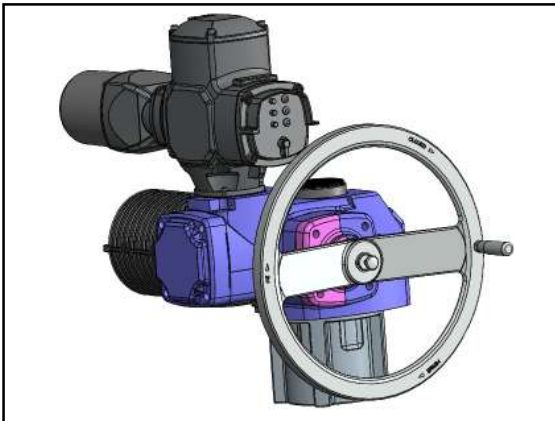
### **Step 3**

Attach Gearcase Cover Handwheel Cover half (FASAEX-10209) to Gearcase Cover Handwheel Side Top (FASAEX-10201) with (1) M6 x 25 socket head cap screw.



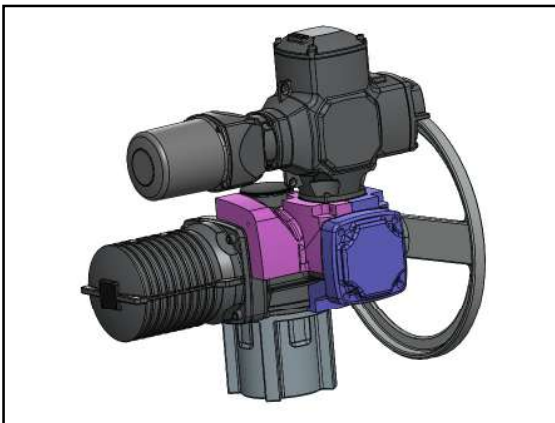
### **Step 4**

Place Gearcase Cover Handwheel Side Bottom (FASAEX-10202) and attach to Gearcase Cover Deckel Cover (FASAEX-10211) and to Gearcase Cover Handwheel Side Top (FASAEX-10201) with (2) M8 x 30 socket head cap screws.



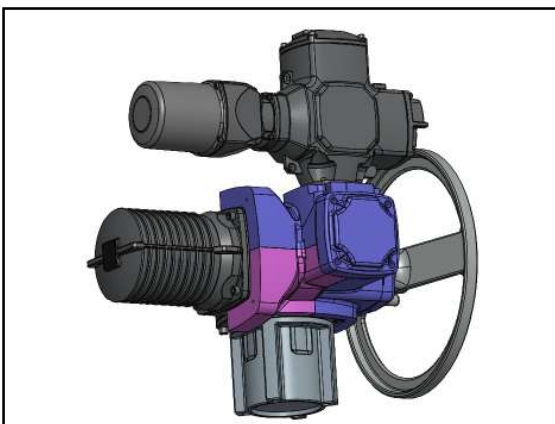
### **Step 5**

Attach the second Gearcase Cover Handwheel Cover half (FASAEX-10209) to Handwheel Side Bottom (FASAEX-10202) with (1) M6 x 25 socket head cap screw.



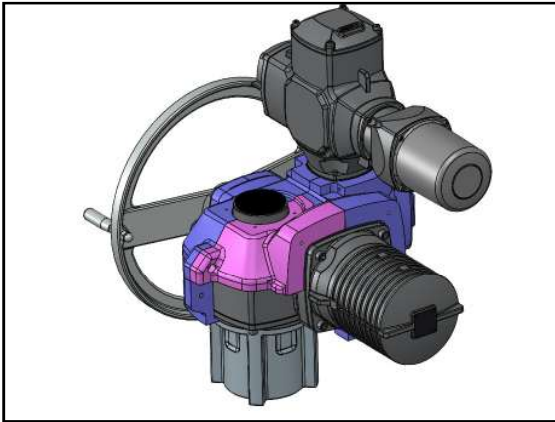
### **Step 6**

Attach Gearcase Cover Motor Side Top1 (FASAEX-10203) to Gearcase Cover Deckel Cover with (1) M8 x 30 socket head cap screw.



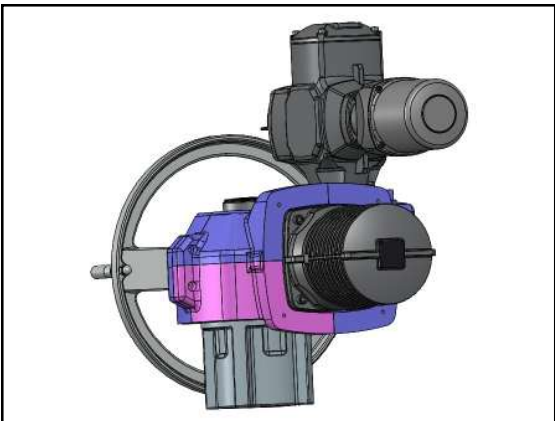
### **Step 7**

Place Gearcase Cover Motor Side Bottom 1 (FASAEX-10205) and attach to Gearcase Cover Deckel Cover with (2) M8 x 30 socket head cap screws.



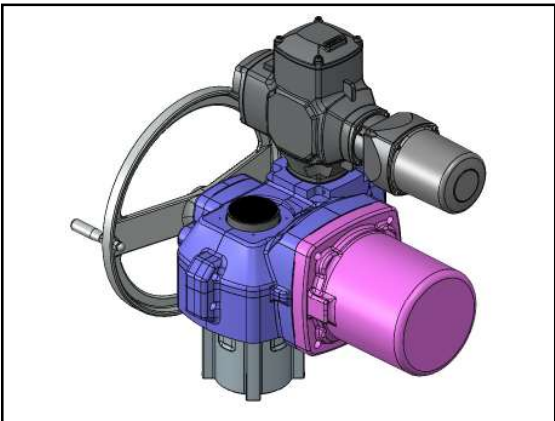
### **Step 8**

Attach Gearcase Cover Motor Side Top 2 (FASAEX-10204) to Gearcase Cover Motor Side Top 1 (FASAEX-10203) and Gearcase Cover Handwheel Side Top (FASAEX-10201) with (1) M8 x 30 socket head cap screw.



### **Step 9**

Attach Gearcase Cover Motor Side Bottom 2 (FASAEX-10206) to Gearcase Cover Motor Side Bottom 1 (FASAEX-10205) and Gearcase Cover Motor Side Top 2 (FASAEX-10204) with (1) M8 x 30 socket head cap screw.



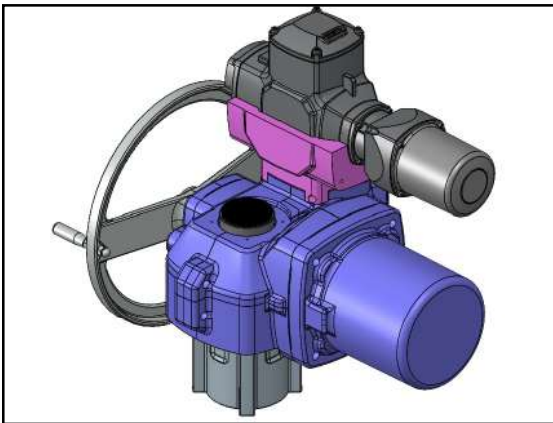
### **Step 10**

Attach Gearcase Cover Motor Cover (FASAEX-10208) to Gearcase Cover Motor Side Top 1 (FASAEX-10201), Motor Side Top 2 (FASAEX-10204), Motor Side Bottom 1 (FASAEX-10205) and Motor Side Bottom 2 (FASAEX-10206) with (4) M8 x 30 socket head cap screws.

## **VERY IMPORTANT!**

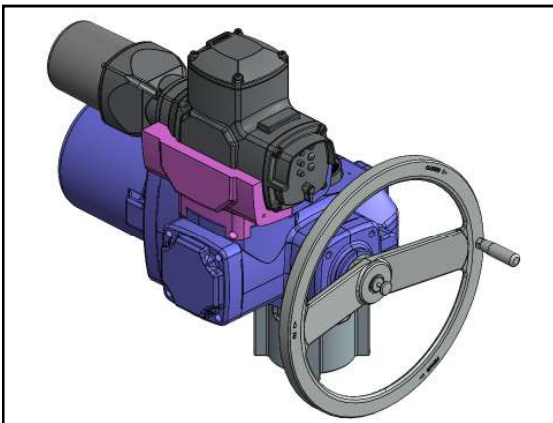
PLEASE leave all fasteners slightly loose to aid in aligning parts during installation. When all parts are installed, go back and **HAND TIGHTEN ONLY** to 15 ft/ lbs.

# **CONTROLS CASE COVER**



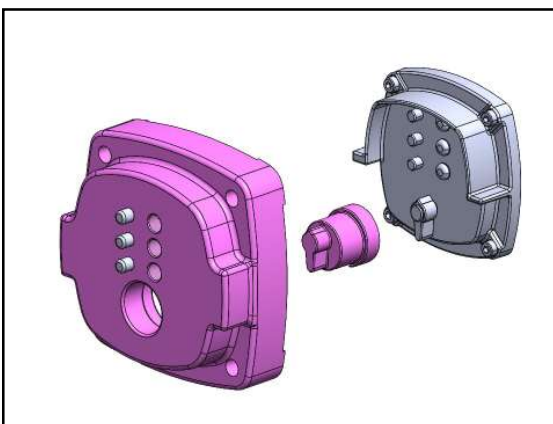
### **Step 11**

Attach Controls Case Gearcase Side 1 (FA-SAEX-C004) to Gearcase Cover Assembly using (2) M8 x 30 socket head cap screws.



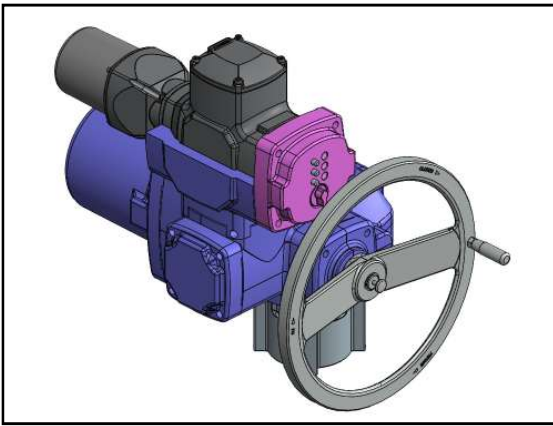
### **Step 12**

Attach Controls Cover Gearcase Side 2 (FASAEX-C005) to Gearcase Cover Assembly using (2) M8 x 30 socket head cap screws.



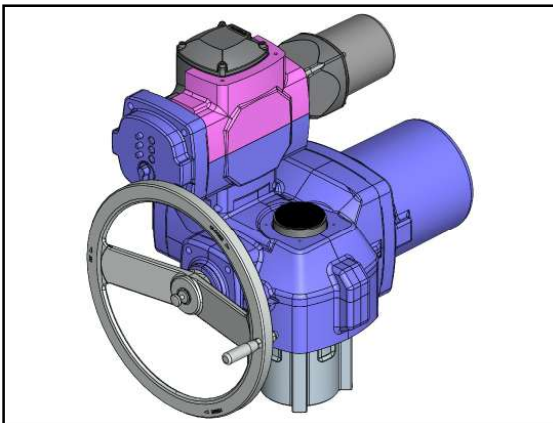
### **Step 13**

Place Control Knob (FASAEX-C010) into the hole in the Controls Cover (FA-SAEX-C009). Ensure the Control Knob matches the orientation of the control knob on the actuator before proceeding to the next step.



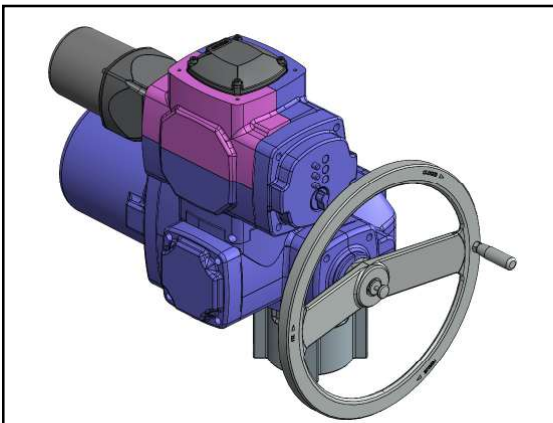
### Step 14

Attach Controls Cover (FASAEX-C009) to Controls Cover Gearcase Side 1 (FASAEX C004) and Controls Cover Gearcase side 2 (FASAEX-C005) with (2) M8 x 30 socket head cap screws.



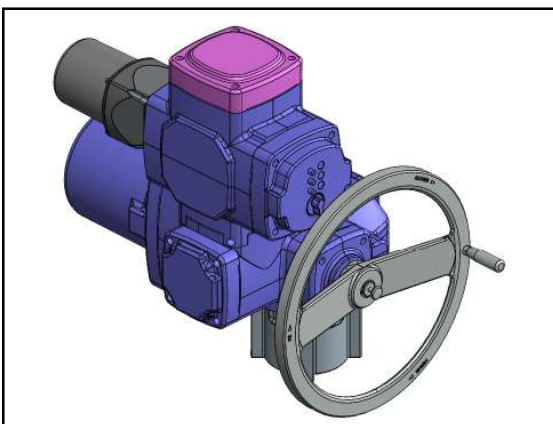
### Step 15

Attach Controls Cover Deckel Cover Side 1 (FASAEX-C002) to Controls Cover (FASAEX-C009) with (1) M8 x 30 socket head cap screw.



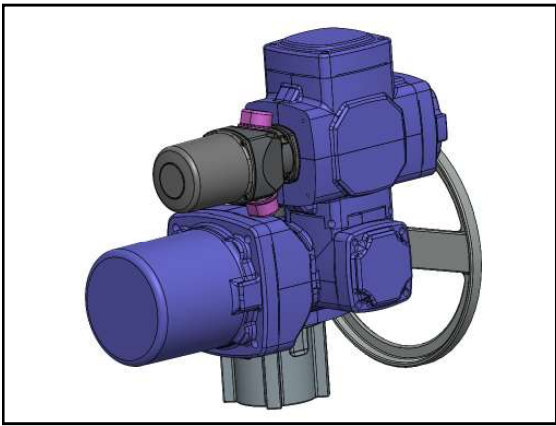
### Step 7

Attach Controls Cover Deckel Cover Side 1 (FASAEX-C003) to Controls Cover (FASAEX-C009) with (1) M8 x 30 socket head cap screw.



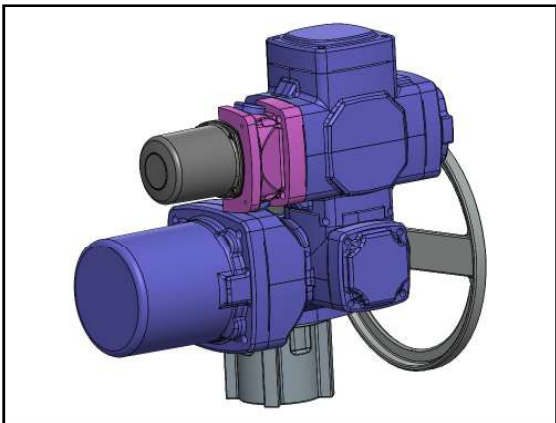
### Step 17

Attach Controls Cover Deckel Cover (FASAEX-C006) to Deckel Cover Side 1 (FASAEX-C002) and Deckel Cover Side 2 (FASAEX-C003) with (4) M8 x 30 socket head cap screws.



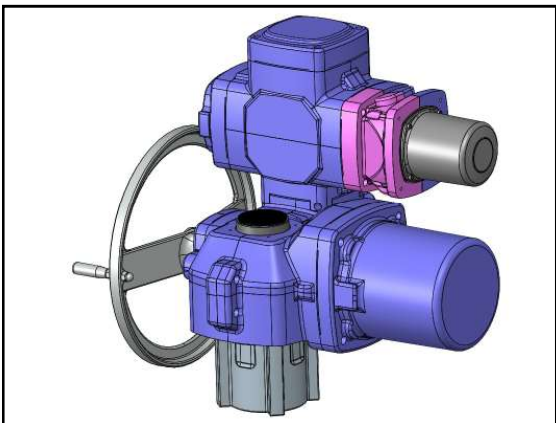
### Step 18

Prepare Conduit Covers (FASAEX-C011) by cutting to fit the specific installation requirements and place on the actuator in preparation for the Controls Case Frame (FASAEX-C007) to be attached.



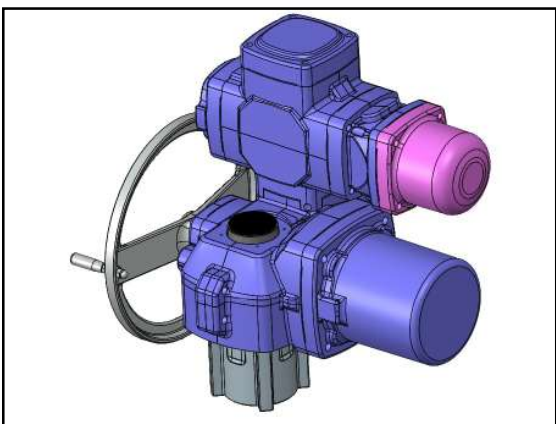
### Step 19

Align Conduit Covers while sliding the first Controls Case Frame (FASAEX-C007) in place and attach to Deckel Cover Side 1 and Deckel Cover Side 2 with (2) M8 x 30 socket head cap screws. *NOTE: The threaded holes are aligned with the screws to allow Hex wrench to fit.*



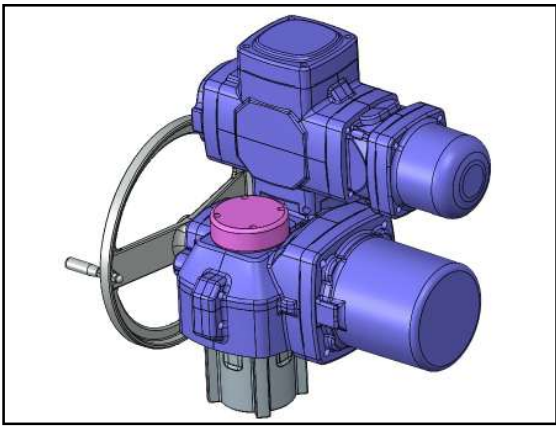
### Step 20

Attach the remaining Controls Case Frame (FASAEX-C007) in place and attach to Deckel Cover Side 1 (FASAEX-C002) and Deckel Cover Side 2 (FASAEX-C003) with (2) M8 x 30 socket head cap screws.



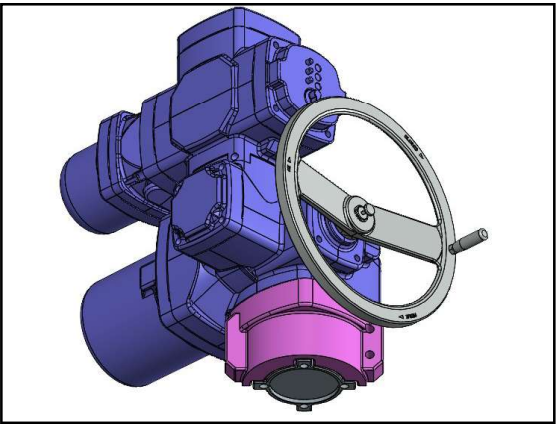
### Step 21

Attach the Controls Case Back Cover (FASAEX-C008) to the two Controls Case Frames (FASAEX-C007) with (4) M8 x 30 socket head cap screws.



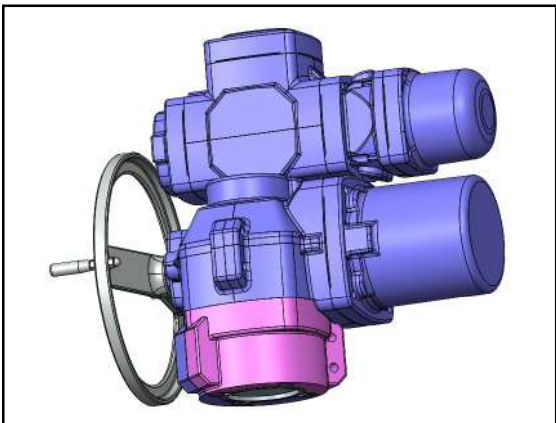
### Step 22

Attach Controls Cover Stem Cap Cover (FASAEX-C007) to Motor Side Top 1 (FASAEX-10203) and Motor Side Top 2 (FASAEX-10202) with (4) M6 x 25 socket head cap screws.



### Step 23

Place one piece of the Gearcase Cover Thrust Base Covers (FASAEX-10210) to thrust base.



### Step 24

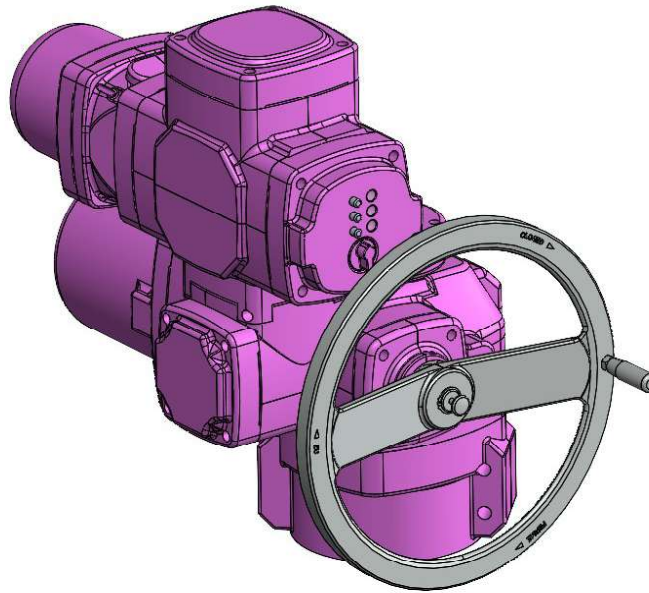
Attach the second Thrust Base Cover (FASAEX-10210) to the first piece with (4) M8 x 30 socket head cap screws.

## Step 25

### **IMPORTANT! FINAL STEPS**

1. Hand tighten all socket head bolts to 15 ft/ lbs. Do not over-torque.
2. Completely fill all bolt holes with 3M CP-25WB Fire Barrier Caulk (included).

## ***Completed Assembly*** **AUMA SAEX - 10.2**



AUMA SAEX 10.2  
Installation Manual

*Safety is our top priority. Ensure all safety measures are adhered to in accordance with the site, location and regulatory standards. Assemble all fasteners loosely at first, and hand-tighten upon completion of assembly. Do NOT over torque any fasteners, doing so could damage the K-MASS.*

**Thermal Designs, Inc. - US**  
5352 Prudence Street  
Houston, Texas 77045 USA  
Phone: +1 713-433-8110  
ussales@tdikmass.com

**Thermal Designs LTD UK - UK**  
Broadway Market Lavington Devizes  
Wiltshire, England UK SN10 5RQ  
Phone: +44 (0) 1380 87079  
uksales@tdikmass.com

**Thermal Designs, Inc. - CA**  
Unit 1, 5220 Duncan Ave  
Blackfalds, Alberta T0M 0J0  
Phone: +1 403-391-1578  
casales@tdikmass.com

**K-MASS Thermal Equipment  
Middle East FZCO**  
P.O. Box 7954, Jebel Ali Free Zone  
Dubai, United Arab Emirates  
Phone: +971 4 806-710  
mesales@tdikmass.com